



# *Applesham Avenue*

Hove, BN3 8JF

mishons



Welcome to this light-filled and beautifully presented semi-detached home on the popular Applesham Avenue. This much-loved family property has been thoughtfully extended and refurbished to a high standard, creating an inviting and practical living space for modern family life.

Upon entering, you're immediately greeted by the abundance of natural light that flows throughout the ground floor. The standout feature of this home is the impressive kitchen extension, a true highlight of the home. With its large skylight, exposed wood flooring, and sliding glass doors that lead to the west-facing garden, this space seamlessly blends style with functionality. The contemporary kitchen boasts generous worktops, ample storage, and a central island, making it ideal for everything from casual breakfasts to evening entertaining.

The open-plan layout connects the kitchen to a comfortable dining area and a cosy living room, complete with an open fireplace—the perfect spot to unwind after a long day. A convenient downstairs W/C completes the ground floor.

Upstairs, you'll find three well-proportioned and beautifully presented bedrooms, each showcased beautifully. The family bathroom is sleek, modern, and designed for practicality! Additionally, the property offers a loft space, providing excellent potential for future expansion (subject to the necessary regulations).

The west-facing garden is a real gem, enjoying afternoon and evening sun—ideal for children to play or for hosting summer barbecues. The property also benefits from a driveway and a garage, perfect for storage or additional parking.

Located on Applesham Avenue, this home is perfectly situated for young families. With excellent schools nearby, easy access to the city center, and a fantastic array of local shops, cafes, and pubs, this is a property you won't want to miss.

➤ *Asking Price* £615,000

3



2



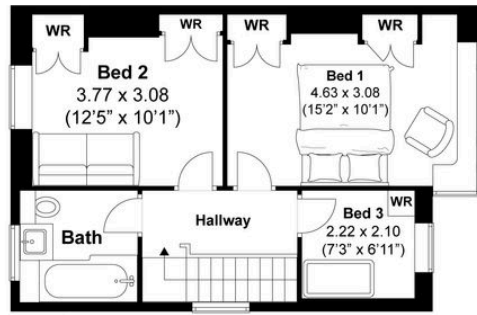
1



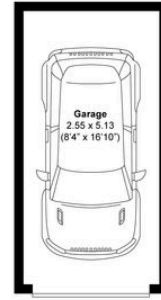
#



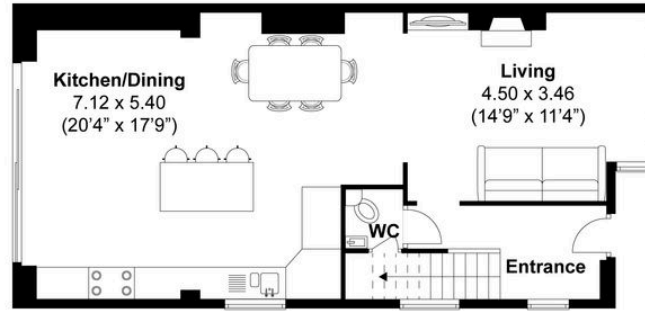
TOTAL FLOOR AREA:  
1103.3 sq. ft. (102.5 sq. m.) approx



FIRST FLOOR



(NOT IN POSITION)



GROUND FLOOR



**Disclaimer:**  
The measurements are approximate and are for illustration purposes only.  
The dimensions are measured internally and in metres and feet. We do not take any responsibility for errors and/or omissions.  
If you require further verification please discuss with the buyer/owner of the property.





Whatever you're looking for...  
*We'll help you find it.*

mishons

✉ [sales@mishons.com](mailto:sales@mishons.com)

☎ 01273 77 88 77

94 Church Road, Hove, BN3 2EB

Monday-Friday: 8:45 am - 6 pm

Saturday: 9 am - 4 pm

Find us on Facebook and Instagram  
@wearemishons or visit [mishons.com](http://mishons.com)