



Dyke Close

Hove, BN3

mishons

Exceptional Five-Bedroom Mock Tudor Detached Family Residence on Dyke Close, Hove...

Situated in one of Hove's most prestigious roads, this exceptional five-bedroom detached family home offers over 4000 sq ft of luxurious living space, perfect for modern family living. Set within a large south-facing plot, the property boasts a truly magnificent garden, featuring an expansive patio area ideal for entertaining or relaxing on summer evenings. The garden is also complemented by a swimming pool, creating a private oasis for family enjoyment.

The ground floor of the property is generously proportioned, with two impressive reception rooms providing ample space for both formal and informal living. There is also a separate utility room, office, and convenient access to the self-contained garage. The standout feature of the home is the state-of-the-art kitchen, which is a true culinary delight. Equipped with top-of-the-line Miele appliances, including an oven, microwave, coffee machine, warming drawers, and dishwasher, as well as a Gaggenau fridge freezer and wine fridge. The kitchen also benefits from underfloor heating, creating a warm and inviting space for both cooking and family gatherings.

On the first floor, you'll find five spacious double bedrooms, all offering ample storage and natural light. The family bathroom is well-appointed, and the master suite is particularly impressive, featuring access to a private south-facing terrace and a luxurious en-suite bathroom, providing a serene retreat for the homeowners.

The property also includes a substantial loft space, which offers potential for conversion if additional living space is required.

Offered with no onward chain, this outstanding home presents an unmissable opportunity for those seeking a truly exceptional family residence in one of Hove's most sought-after locations.

► *Price Price* £3,000,000

5



2



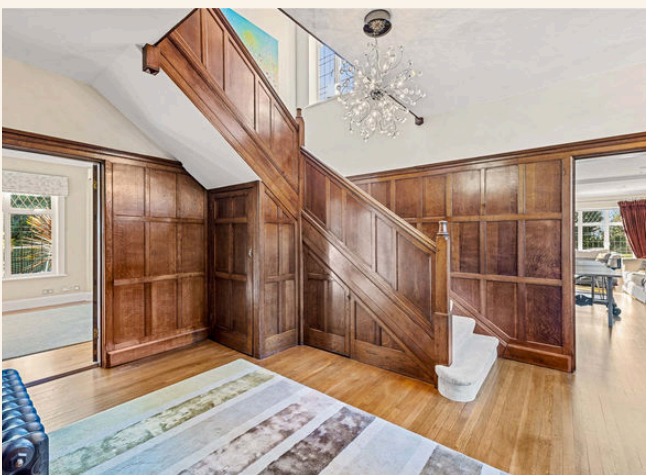
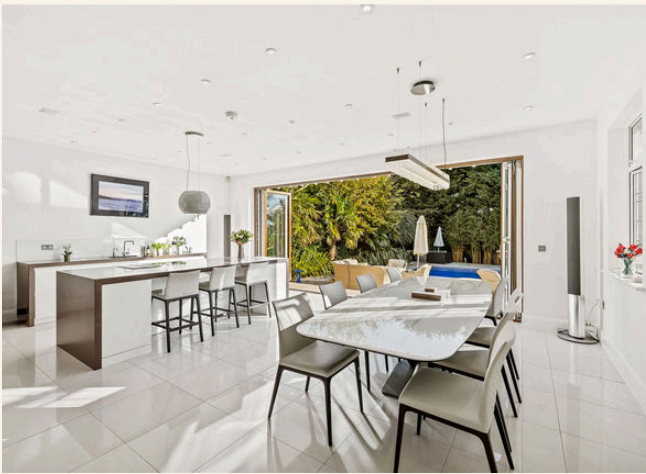
2



TBC





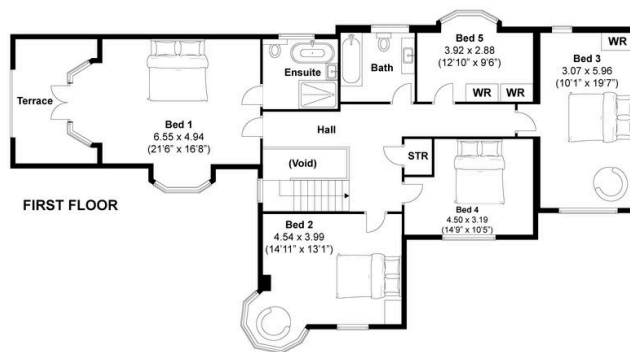
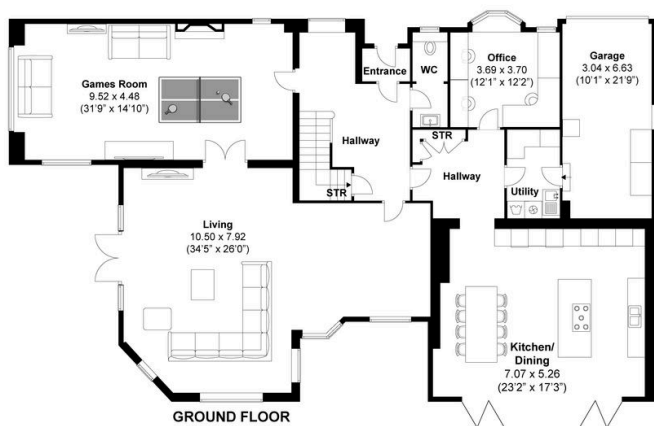




TOTAL FLOOR AREA:
4114.8 sqft (382.3 sqm) Approx

Dyke Close, Hove
Approximately 382.3 sqm (4114.8 sqft)

mishons



Disclaimer:
The measurements are approximate and are for illustration purposes only.
The dimensions are measured internally and in metres and feet. We do not take any responsibility for errors and/or omissions.
If you require further verification please discuss with the buyer/owner of the property.



Exceptional service

We love doing what we do, so it's always done with honesty, energy, and a smile. From marketing to moving, our team is here to guide you, step-by-step, through the process of selling your home. We'll always give you honest opinions and share our local market expertise so that you'll know where you stand at every point of the journey.

Our people are a great team. All pros, brimming with experience and drive. So we promise you all focus and no faff to make sure your sale runs smoothly and hassle-free from start to completion. We'll always keep you in the loop and keep a beady eye on your chain if you're in one so that we can respond to any changes instantly.

And never forget, we're here for you at any time.

Service checklist



Personal, one-to-one service



Expert social media marketing



Honest valuations in line with current market conditions



Professionally designed and printed brochures



Ahead of the game marketing strategies



Daily sales progression



Professional photography



In-house financial advisors

Mishons & their clients give notice that:

1. These sales and particulars do not constitute any part of an offer of contract, and are for the guidance of prospective purchasers only and should not be relied on as statements of fact.
2. No representations are made in these particulars as to the condition of the property or as to whether any service or facilities are in good working order.
3. All Measurements are approximate.



Whatever you're looking for...
We'll help you find it.

✉ sales@mishons.com

☎ 01273 77 88 77

94 Church Road, Hove, BN3 2EB

Monday-Friday: 8:45 am - 6 pm

Saturday: 9 am - 4 pm

Find us on Facebook and Instagram
@wearemishons or visit mishons.com