

mishons

Land | New Homes | Investments



Stag House

Somerset Street, Brighton, BN2 1GW

The Development

An exquisite complex of four new apartments in the heart of Kempdown.

Introducing the epitome of modern living in the coveted Stag House complex – four exquisite new apartments that encapsulate the essence of city chic. Located in the heart of vibrant Kempdown, Brighton, these stylish residences offer an enticing blend of contemporary luxury and urban convenience.

Each of these apartments, though still in the final stages of construction, promises a lifestyle that is nothing short of extraordinary. With the visionary design and quality craftsmanship, they stand as a testament to the future of elegant living. The key features of these homes include private balconies, where you can savor moments of tranquility while overlooking the dynamic cityscape.



Specification



These apartments have been thoughtfully equipped with top-of-the-line appliances, ensuring that your daily life is not just convenient but also infused with a touch of opulence. The open, spacious layouts invite natural light to fill every corner, creating an ambiance that's both inviting and sophisticated.

Open plan kitchen/ living areas
Ali powder coated double glazing
Worcester Gas Combi Boiler

Leasehold 999 years

Service Charge tbc

Car-free development

Sky TV / Broadband

Granite work tops

Dove grey kitchens

Marble effect tiles

Composite grey decking

Underfloor heating throughout - water fed

LVT oak flooring throughout



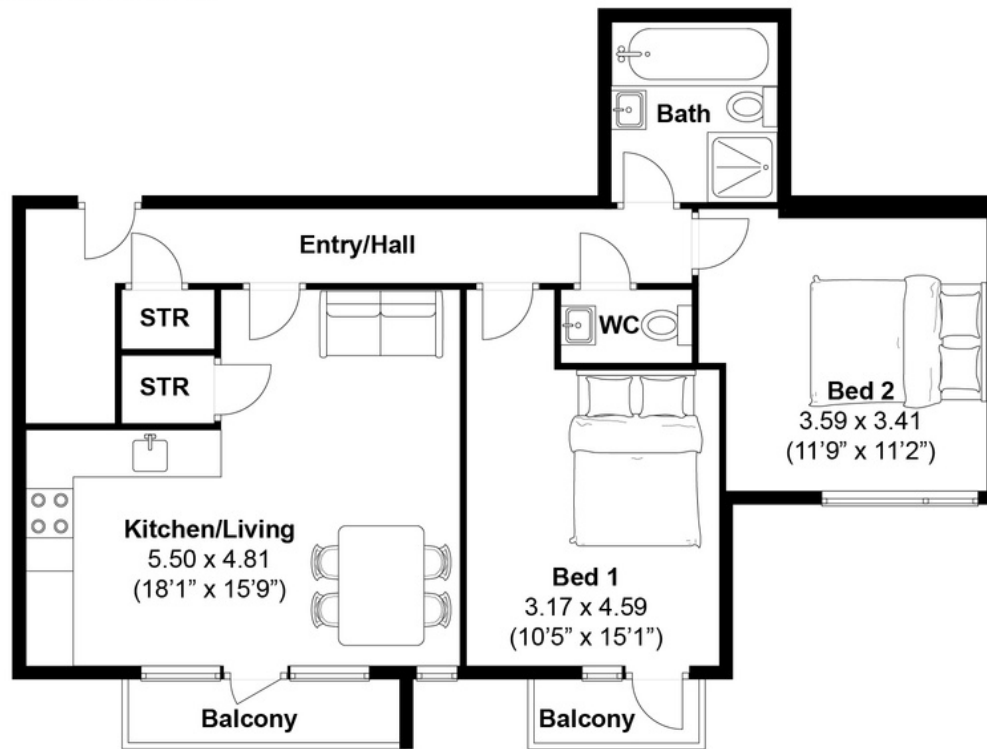
Please note - the development is currently under construction and some specification is tbc.
Please contact a sales advisor to discuss these options in further detail.

Floor Plans

Upper Bedford Street, Brighton

Approximately 73.9 sqm (795.7 sqft)

mishons



Disclaimer:

The measurements are approximate and are for illustration purposes only.
The dimensions are measured internally and in metres and feet. We do not take any responsibility for errors and/or omissions.
If you require further verification please discuss with the buyer/owner of the property.

Plot 1



Measurements are approximate and are for illustration purposes only.
The dimensions are measured internally and in metres and feet. We do not take any responsibility for errors and/or omissions.
If you require further verification please discuss with the buyer/owner of the property.

Floor Plans

Plot 2



2



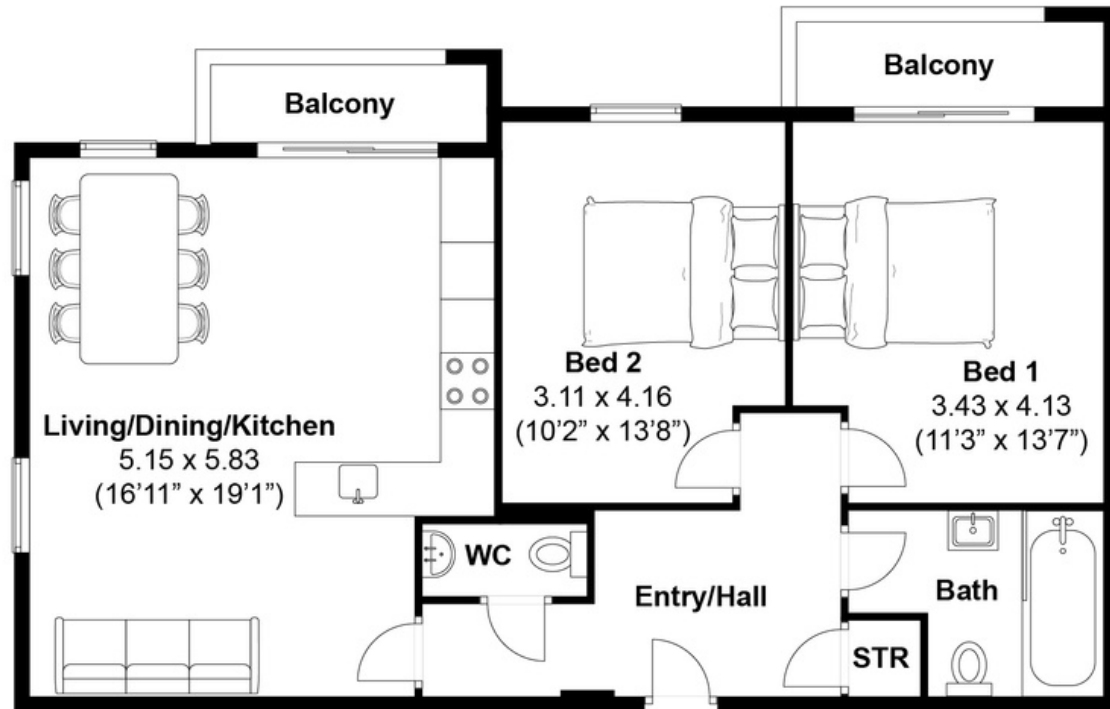
1



1

Upper Bedford Street, Brighton
Approximately 81.4 sqm (876.3 sqft)

mishons



Disclaimer:

The measurements are approximate and are for illustration purposes only.
The dimensions are measured internally and in metres and feet. We do not take any responsibility for errors and/or omissions.
If you require further verification please discuss with the buyer/owner of the property.

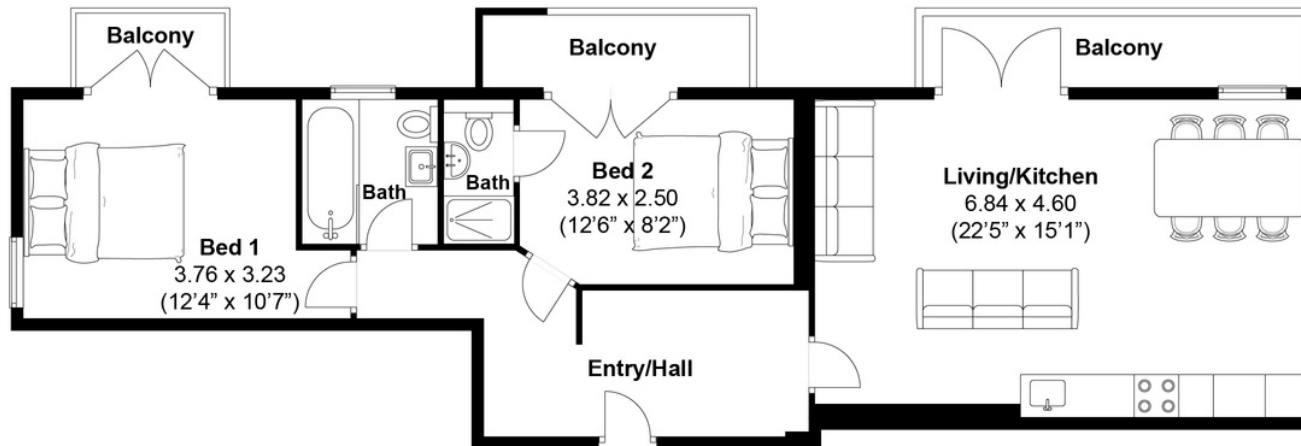
Floor Plans

Upper Bedford Street, Brighton

Approximately 85.6 sqm (921.1 sqft)

mishons

Plot 3



Disclaimer:

The measurements are approximate and are for illustration purposes only.
The dimensions are measured internally and in metres and feet. We do not take any responsibility for errors and/or omissions.
If you require further verification please discuss with the buyer/owner of the property.

*Measurements are approximate and are for illustration purposes only.
The dimensions are measured internally and in metres and feet. We do not take any responsibility for errors and/or omissions.
If you require further verification please discuss with the buyer/owner of the property.*

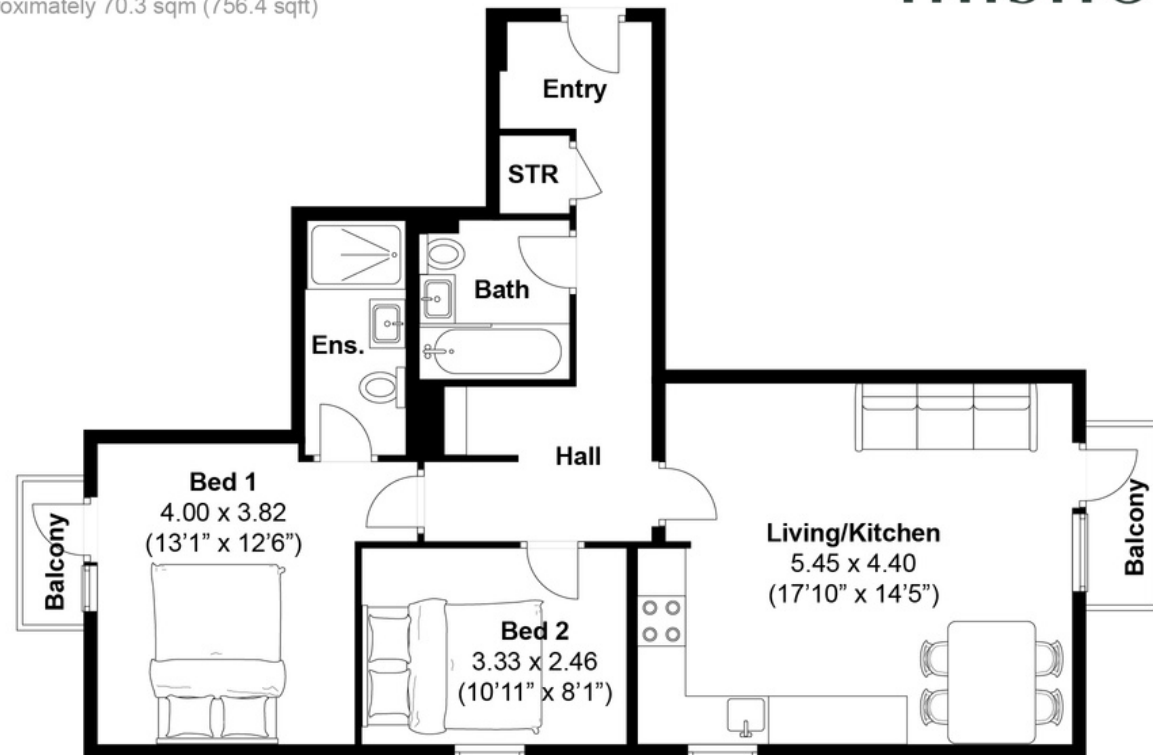
Floor Plans

Plot 4



Upper Bedford Street, Brighton
Approximately 70.3 sqm (756.4 sqft)

mishons



Disclaimer:

The measurements are approximate and are for illustration purposes only.
The dimensions are measured internally and in metres and feet. We do not take any responsibility for errors and/or omissions.
If you require further verification please discuss with the buyer/owner of the property.



Scan here for more information

01273 77 88 77

newhomes@mishons.com

94 Church Road | Hove | BN3 2EB



mishons

Land | New Homes | Investments

